

Decimals up to 2 d.p.

- 1 What number is represented on the place value chart?

Ones	Tenths	Hundredths
	0.1 0.1	0.01 0.01 0.01
0	2	3

Complete the sentences.

There are ones, tenths and hundredths.

The number is .

- 2 Represent these numbers on a place value chart.

Complete the sentences.

- a) 0.56

There are ones, tenths and hundredths.

- b) 0.08

There are ones, tenths and hundredths.

- c) 1.48

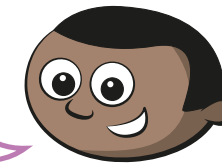
There are ones, tenths and hundredths.

- d) 2.07

There are ones, tenths and hundredths.

- 3 Mo is thinking about tenths and hundredths.

In the number 2.49
the digit 4 represents
4 tenths or 0.4



What is the value of the digit 4 in each of these numbers?

a) 14.8 4 ones d) 42.03 4 tens

b) 13.74 4 hundredths e) 106.48 4 tenths

c) 8.04 4 hundredths f) 176.4 4 tenths

- 4 a) Circle the number that has 5 in the tenths position.

53

5.3

0.53

0.35

- b) Write three numbers that have 3 in the hundredths position.

eg. 0.03 4.53 72.03

- 5 Complete the calculations.

a) $0.64 = 0.6 +$

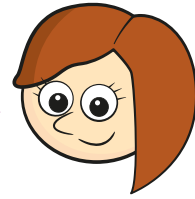
c) $0.3 + 0.05 =$

b) $0.53 = 0.5 +$

d) $0.06 + 0.8 =$

- 6 Rosie is finding different ways to partition 0.73

0.73 = 0.7 + 0.03
or 0.3 + 0.43



Ones	Tenths	Hundredths
0	7	3

In what other ways can 0.73 be partitioned?

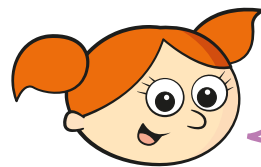
List as many ways as you can below.

0.1 + 0.63 0.5 + 0.23

0.2 + 0.53 0.6 + 0.13

0.4 + 0.33

- 7 Alex is thinking of a number.



My number has 3 digits,
is greater than 1 but less than
2 and has 3 tenths.

- a) What number could Alex be thinking of?

Talk about it with a partner.

- b) Write all the possible numbers Alex could be thinking of.

1.30, 1.31, 1.32, 1.33, 1.34, 1.35, 1.36, 1.37,
1.38, 1.39

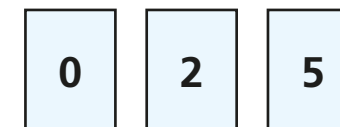
- c) Write another clue that would mean Alex's number is 1.34

It has 4 hundredths.

- 8 Match the words to the numerals.

5 ones, 6 tenths and 5 hundredths	0.56
5 tenths and 6 hundredths	60.05
5 ones, 5 tenths and 6 hundredths	5.56
6 tens and 5 hundredths	5.65

- 9 Annie has three digit cards.



Are the statements true or false? Explain your answers.

- a) The largest number Annie can make is 5.02

False 5.20 > 5.02

- b) The smallest number Annie can make is 0.25

True

- c) Annie can make six different numbers.

0.25 0.52 2.05 2.50 5.02 5.20

True

